

CERTIFICATE OF LOCATION OF GOVERNMENT CORNER

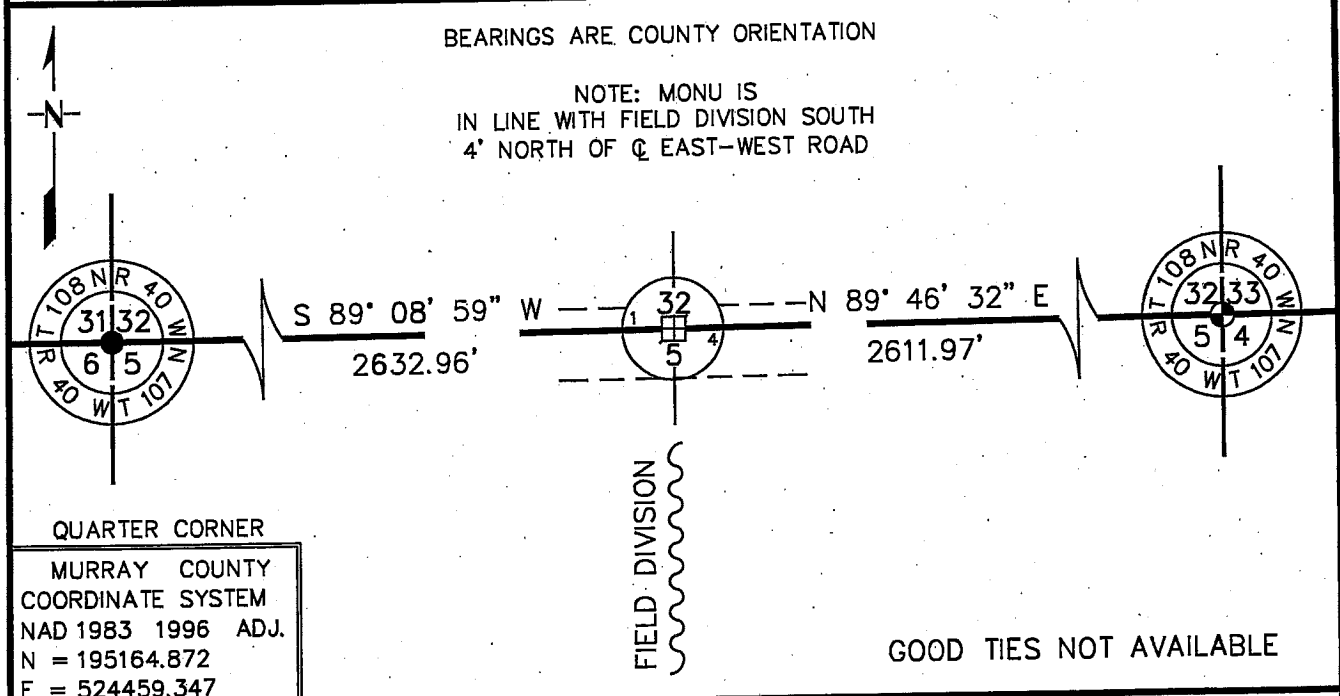
NORTH QUARTER Corner of Section 5, Township 107 N, Range 40 W
5th Principal Meridian, State of Minnesota, County of MURRAY

At the corner location shown on the sketch:

- On 11/8/2007 found a 8" LONG STEEL FENCE POST, DOWN 0.3', OVER A
DATE POINTED STONE, DOWN 1.1'
- left monument as found, lowered monument, removed monument (explain)
- On 11/8/2007 Placed a 3/4" X 6" REBAR WITH PLASTIC CAP STAMPED
DATE "MN DNR LS 17003", DOWN 6", OVER STONE

BEARINGS ARE COUNTY ORIENTATION

NOTE: MONU IS
IN LINE WITH FIELD DIVISION SOUTH
4' NORTH OF Q EAST-WEST ROAD



QUARTER CORNER
MURRAY COUNTY
COORDINATE SYSTEM
NAD 1983 1996 ADJ.
N = 195164.872
E = 524459.347

GOOD TIES NOT AVAILABLE

Statement of evidence for this corner location is on back of this page.

10/31/2008
SPK00220.00.00.01

I certify that this document was researched and prepared by me or under my direct supervision.

SIGNATURE *Russ W. Shippel* DATE 10/14/09 License Number 17003
 Title: Land Surveyor Professional Engineer County Surveyor County Engineer

The DNR-Division of Lands and Minerals contacted the following for survey information:

Minnesota Secretary of State's Office
Murray County Recorder's Office
Murray County Highway Engineer's Office
Bueltel-Moseng Land Surveying of Marshall
Zieske Land Surveying Inc. of Windom
Madsen Land Surveying Inc. of Fairmont
Pellinen Land Surveying of Hutchinson

- 1861 U.S. General Land Office notes, obtained from the Secretary of State's Office, show the corner marked with a wood post in a mound with trench and pits as per instructions. The following bearing tree was marked:
6" Ash, South 60° West, 140 links (92.40 feet)
- 1890 September, a plat of survey in the Southwest Quarter of Section 32, by S.P. McIntyre, County Surveyor, obtained from the County Recorder's Office, shows the quarter corner, but does not indicate what kind of monument was found or set. The corner is shown:
40.00 chains (2640.00 feet) from the northeast corner of Section 6
- No Surveyor's Record Book A, pages 36 and 37, obtained from the County Recorder's
Date Office, contain a survey in the Southwest Quarter of Section 32, which show the same information that the 1890 plat of survey by S.P. McIntyre shows.
- 1913 October, Surveyor's Record Book A, page 235, obtained from the County Recorder's Office, contains a survey of Section 5 by J.H. Woolstencroft. Survey states that the corner was established from a witness tree. A description of what kind of monument was found or set at the corner is not given.
- 1913 October, Surveyor's Record Book, obtained from the County Highway Engineer's Office, contains a survey of Section 5 by J.H. Woolstencroft. Survey states that the corner was established from a witness tree. A description of what kind of monument was found or set at the corner is not given.
- No Surveyor's Record Book, obtained from the County Highway Engineer's Office,
Date contains a survey in the Southwest Quarter of Section 32, which shows the quarter corner, but does not indicate what kind of monument was found or set. The corner is shown:
40.00 chains (2640.00 feet) from the northeast corner of Section 6

North Quarter Corner of Section 5, Township 107 North, Range 40 West, Page 2 of 4

1936 A Survey Map by the National Park Service that shows Sections 5 and 6, T107N, R40W, Sections 1 and 2, T107N, R41W, and Sections 35 and 36, T108N, R41W, in the possession of the DNR Division of Lands and Minerals, shows that a base line was measured as follows:

from a brass plug at the intersection of a north-south concrete pavement road and an east-west gravel road in the vicinity of the northwest corner of Section 2, Township 107 North, Range 41 West to the area of the northeast corner of Section 5, Township 107 North, Range 40 West

A spike and lath were set in the area of the corner and they are shown to be:
on the base line
9.3 feet north of an east-west fence
in line with fence south
2618.12 feet from the area of the northeast corner of Section 5

The map has conflicting distances to section and quarter corners and appears that it's a preliminary survey because no boundary work is shown on it.

1966 DNR Bureau of Engineering contracted N.C. Hoium and Associates Inc. of Coon
1967 Rapids, Minnesota, to survey property in Lake Shetek State Park. The DNR records of survey show that a traverse was run from the northwest corner of Section 1, Township 107 North, Range 41 West to the northeast corner of Section 5, Township 107 North, Range 40 West. A fence line south is shown in the area of the quarter but no distances are shown to it. A position for the quarter corner was not established.

1970 Field notes and a Property Map of a DNR Bureau of Engineering survey in the Southwest Quarter of Section 32 state that the corner was established on paper only as follows:
assumed at a split of the north line of Section 5 using Hoium's distance, the split falls 15.2 feet west of fence to south

The notes depict the corner position to be north of the center line of an east-west road and 456.20 feet east of a Conservation Monument set by Hoium.

1972 November 8, Surveyor's Record Book, obtained from the County Highway Engineer's Office, shows that a field stone was located at the corner, 10 inches below the gravel road top. An 8 inch steel post was placed over the stone and the following ties were taken to it:
RP, nail in 2"x 2" hub at corner post location, south, 44.00 feet
RP, nail in 2"x 2" hub east of first steel fence post, southwest, 58.05 feet
RP, N&C top of wood fence post painted red, northeast, 45.90 feet

North Quarter Corner of Section 5, Township 107 North, Range 40 West, Page 3 of 4

1972 November 8, Murray County Highway Department section corner information website, states that a field stone was located at the corner, 10 inches below the gravel road top: An 8 inch steel post was placed over the stone and the following ties were taken to it:

- RP, nail in 2"x 2" hub at corner post location, south, 44.00 feet
- RP, nail in 2"x 2" hub east of first steel fence post, southwest, 58.05 feet
- RP, N&C top of wood fence post painted red, northeast, 45.90 feet

The following is also noted:

"call for more details"

1976 April 12, a page in a field notebook, obtained from Bueltel-Moseng Land Surveying, shows that a steel post set by County Highway Department in 1972 was found at corner (County found field stone at corner). The following ties are shown to the corner:

- 3 feet north of the center line of an east-west gravel road
in line with a fence south
- N&D on south side of power pole, east-northeast, 115.70 feet
- N&D on south side of power pole, west-northwest, 197.55 feet
- State Park sign post, south-southwest, 44.10 feet

1981 December, a hand written statement with Willard Pellinen's business card copied thereon, from McCombs- Knutson Associates, Inc. in the possession of the DNR Division of Lands and Minerals, states the following about the corner:

"we found a steel post set by Co. Hwy Dept in 1972 (County found stone)"

The following ties are shown to the corner:

- 3' ± north of centerline gravel road-fence south
sign post, south, 44.10 feet
- N & D in power pole, ENE, 115.70 feet
- N & D in power pole, WNW, 197.55 feet

An attached sketch shows the corner:

- 2632.68 feet from the northeast corner of Section 6
- 2617.85 feet from the northeast corner of Section 5

1994 A Certificate of Survey for property in the Southwest Quarter of Section 32, obtained from Madsen Land Surveying Inc., shows that an iron monument was found at the corner. The corner is shown:

- 2615.48 feet from the northeast corner of Section 5

North Quarter Corner of Section 5, Township 107 North, Range 40 West, Page 4 of 4

1994 April 22, Murray County Highway Department section corner information website, states that a steel fence post over a stone was located at the corner. The following ties are shown to the corner:

BC in power pole, northeast, 115.90 feet
State Park steel post, south, 44.0 feet

2007 November 8, the DNR Division of Lands and Minerals dug by hand and found an 8 inch long steel fence post, down 0.3 of a foot, at corner over a pointed stone down 1.1 feet. Searched for but found no evidence of the record ties. The stone was found to be:

4.0 feet north of the center line of an east – west gravel road
in line with a field division south
2611.97 feet from the northeast corner of Section 5
2632.96 feet from the northeast corner of Section 6

Analysis of the above information led the DNR Division of Lands and Minerals to conclude that the found stone marks the location of the corner. The found steel fence post was discarded.